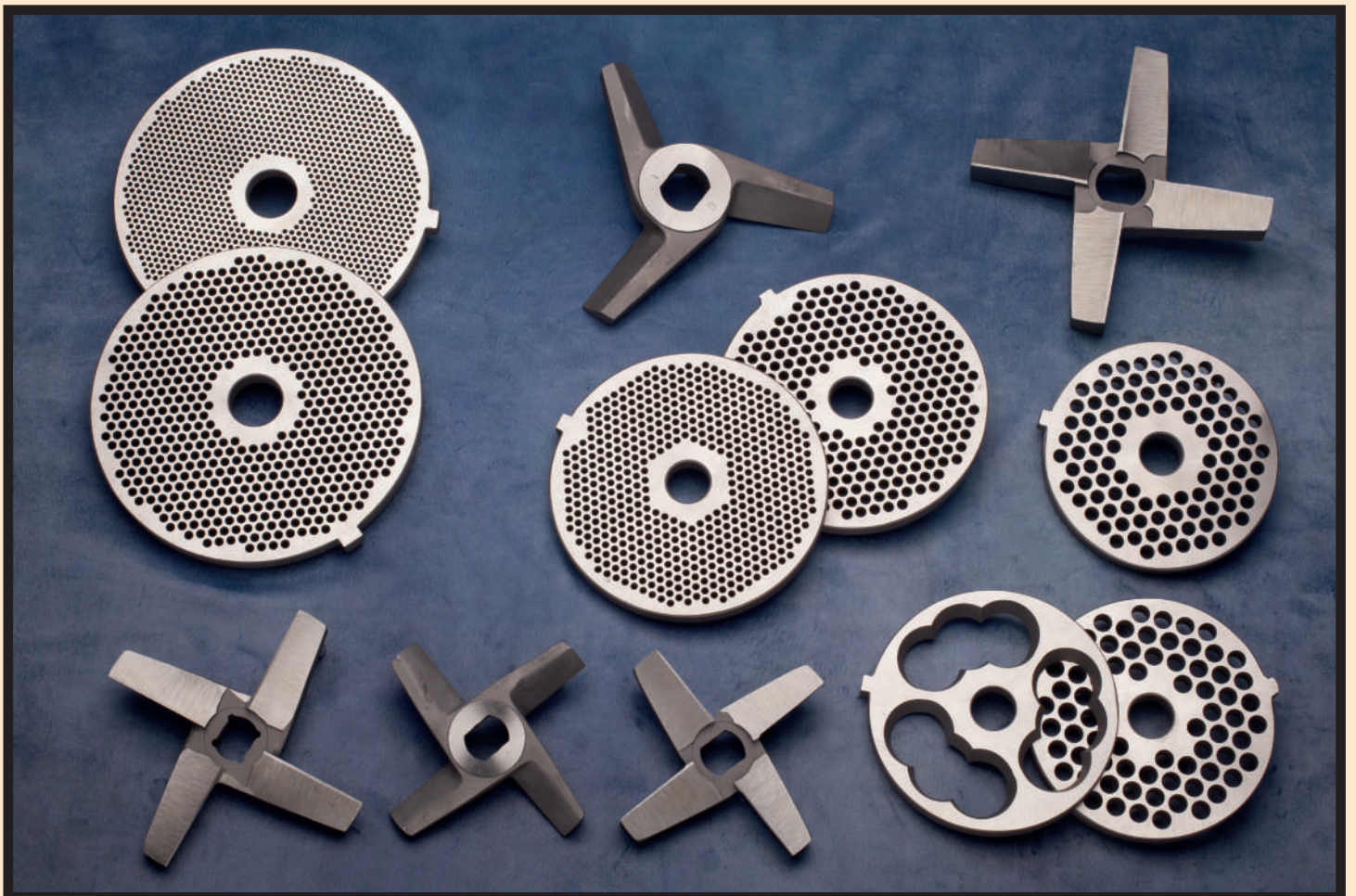
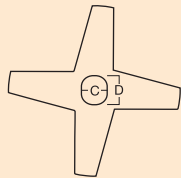
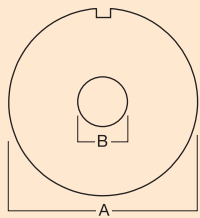


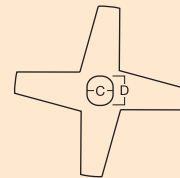
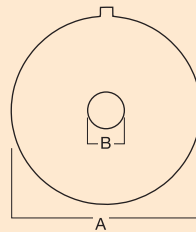
PLACAS Y CUCHILLAS PICADORA / *MINCER PLATES AND KNIVES*  
UNGER / EXCELSIOR







UNGER



EXCELSIOR

## UNGER

Picadora / Mincer	C106	D114	E130	G160	U200
Ø Placa (A) Ø Plate (A)	106	114	130	160	200
Ø Agujero central (B) Ø Center hole (B)	28	29	32	42	52
Eje cuchilla (Cx D) Knife axle (Cx D)	16 x 20	17 x 21	19 x 23	23 x 32	32 x 40

Medidas aproximadas / Approximate measurements

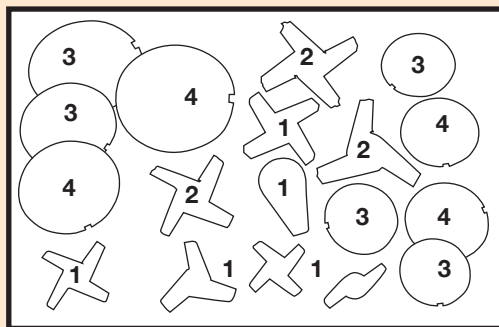
Otros modelos disponibles / Other models available

## EXCELSIOR

Picadora / Mincer	130	150	180
Ø Placa (A) Ø Plate (A)	130	150	180
Ø Agujero central (B) Ø Center hole (B)	23	23	28
Eje cuchilla (Cx D) Knife axle (Cx D)	16 x 22	16 x 22	22 x 28

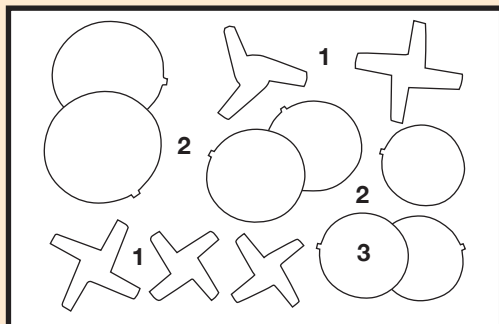
Medidas aproximadas / Approximate measurements

Otros modelos disponibles / Other models available



## UNGER

- 1\_ Cuchillas standard / Standard knives
- 2\_ Cuchilla "Corte Inclinado" / "Inclined cut" knives
- 3\_ Placas inox o acero forjado / Stainless Steel or Forged Steel plates
- 4\_ Placas precorte / Precut plates



## EXCELSIOR

- 1\_ Cuchillas acero forjado / Forged Steel knives
- 2\_ Placas inox o acero forjado / Stainless Steel or Forged Steel plates
- 3\_ Placas precorte inox / Stainless Steel precut plates

